



ELYPLAST[®]

Fibreglass laminates

NEW ELYONDA XLT THE ALL-PURPOSE CORRUGATED SHEET

Elyonda XLT is a matt fibreglass sheet protected by a layer of gelcoat, which ensures resistance to atmospheric abrasion, prevents the glass fibres from rising to the surface and protects against UV rays. It is ideal for the construction of pergolas, verandas, roofs for garden sheds and DIY projects.

www.grp-sheets.com/en/

 **Brianza Plastica**





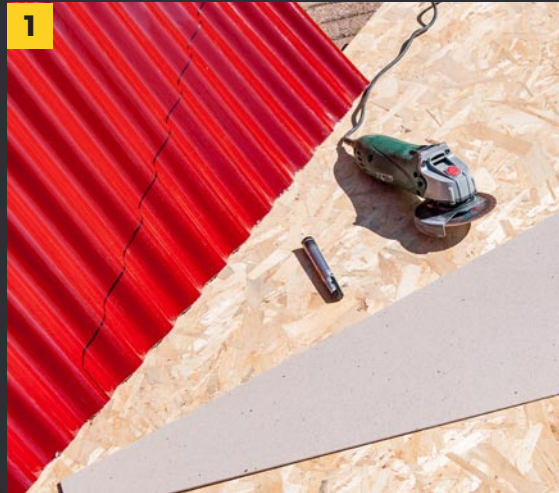
TOOL SHED



Very fast to build: just a light frame of strips with a cross-section suitable for the overall dimensions of the construction.



QUICK AND EASY TO APPLY



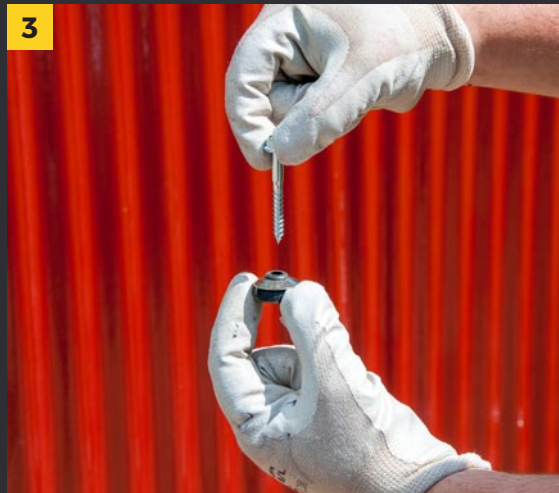
1 The sheets can be cut quickly with an angle grinder equipped with a disc for cutting metal. Mark the cutting lines with a felt-tip pen; in case of irregular pieces, templates can be made out of cardboard.

2 Application on the substructure is very simple: position the sheet, hold it in place with spring clamps and drill a hole through the crest of the wave in correspondence of the wooden strip.



3 Secure with hexagonal head screws and the special gaskets with washer and grommet that prevent rainwater from passing through.

4 With the sheet positioned on the frame underneath and held in place by clamps, insert the screws into the hole and tighten with a screwdriver. Calibrate the tightening so that the grommet is flush against the sheet without flattening the wave.



ANGLED CUTS AND COMPLETION OF THE ROOF



DOUBLE-PITCHED ROOF

The ridge allows joining two roof pitches, completing it from a functional and aesthetic perspective. The ridge is also made of fibreglass.



1 After marking the special pieces to cover the gable of the garden shed or tool shed, make the cuts without any problem, even if they are angled with respect to the inclination of the wave. It is recommended to move the grinder slowly, while accurately following the marking.

2 Normally, the roof panels should overlap laterally by half a wave; however, on particularly flat



roofs they should overlap of a wave and a half. **3-4** Lay the sheets on the pitches, measure the length of the roof and size the ridge by removing the excess at one end. Always follow the same cutting method. At the end, position the ridge using the rafters underneath as a reference, make a hole and apply the fixing screws, which should also pass through the overlapped sheets.





ALWAYS PROTECTED

A roof that protects from rain, sun and everything that falls from plants and trees: sap, flowers, leaves and ripe fruits. This can be created with a simple wooden structure covered with Elyonda XLT corrugated sheets.



FOUR EASY AND QUICK STEPS



1 Once the total length of the roof has been measured, calculate how many sheets are needed to cover it. The best aesthetic result is obtained by cutting all the sheets at the same length; therefore, mark the excess part to be removed on each sheet.
2 Cut using an angle grinder; to save time, overlap several sheets and make a single cut.



3 The sheets placed side by side should overlap by half a wave; also in this case, if the slope is minimal, overlap each sheet by one and a half wave.
4 Apply the fixing screws by drilling a hole through the crest of the wave in a position where it intercepts the wooden strips underneath; to obtain the best aesthetic result, the holes should be spaced at regular intervals.

