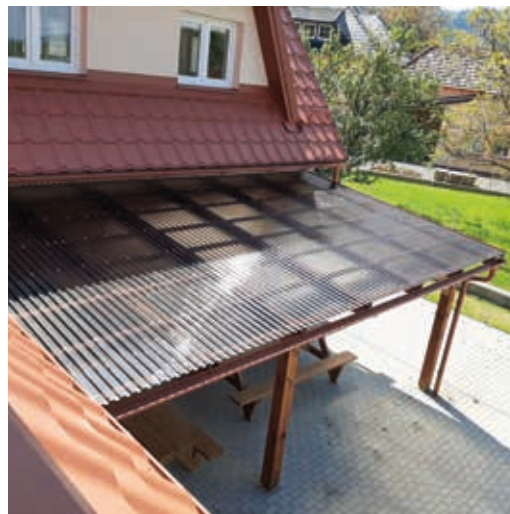


Lightweight Roofing Collection



ELYPLAST®

FIBERGLASS LAMINATES IN SHEETS AND ROLLS.

Corrugated and flat rolls.

Corrugated rolls have a profile similar to the zinc-coated sheets. Used for roofings, curtain walls, fencings shelters, etc. the wide range of height and length dimensions allows for continuous solution, reducing the number of overlaps.

Flat laminate rolls of various thicknesses, height and length dimensions, are particularly well suited to walls. They are the ideal solution to realize doors, windows and vertical closures in general, in cases where durability is essential and to prevent against breakage and accidents.

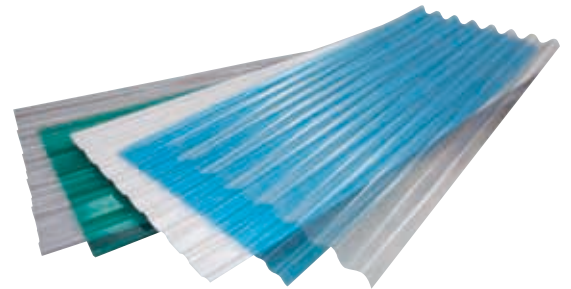
Width: from 1.000 to 3.000 mm

Length: from 5 to 40 mt

Straight sheets.

This product line contains a wide range of profiles which reflects those of the sheets most frequently used for roofings, translucent walls and discontinuous skylights on pitched roofings.

Elyplast corrugated sheets can be curved during installation within certain limits, especially when roofs are not flat, as in the case of tunnel greenhouses.



ELYONDA LT

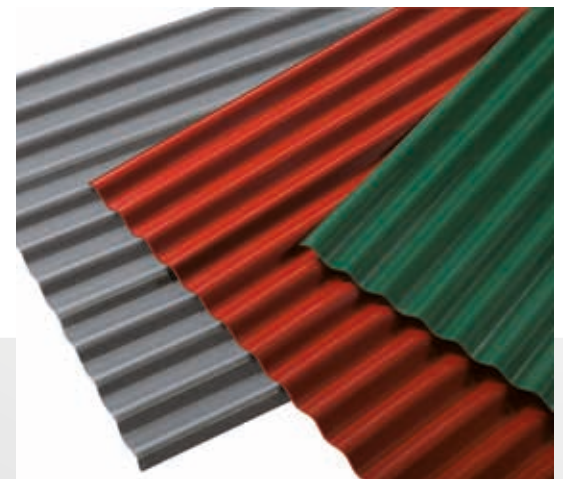
ELYONDA XLT

OPAQUE GRP SHEETS "DIY".

Opaque fiberglass sheets with uv-protection that creates an armour on the surface, providing high resistance to atmospheric abrasion. Main applications: pergolas, verandas, roofs, gardening, hobby tools, sheds.

Width: 900 - 1.200 mm

Length: 2 - 3 mt (other dimensions available on request)



ELYCLEAR

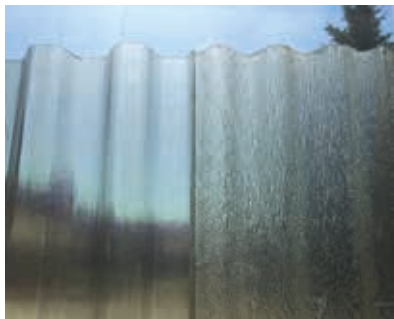
THE NEW EMBOSSED TRANSLUCENT GRP SHEETS.

A new, innovative fiberglass sheet that gives the ambient a completely new light and comfort. The upper side is uv-protected; the lower side is embossed finished and ensures a uniform light diffusion, for a better visual comfort. Elyclear has a high mechanical and chemical resistance, a very good aesthetic appearance, with no glass fibers visible.

Profile: RN 76/18

Width: 1.000 mm

Length: 2 mt (other dimensions available on request)



ELYSOL[®]

COMPACT POLYCARBONATE CORRUGATED AND RIBBED SHEETS.

Elysol compact corrugated and ribbed polycarbonate sheets are uv-protected on one or two sides and are lightweight, highly resilient, versatile, with excellent weather resistance; they have good performance of fire reaction and an exceptional capacity to transmit light.

Thanks to its transparency and impact resistance, Elysol is widely used in industrial and agricultural buildings to create roofs and curtain walls, skylights, greenhouses, porticoes and canopies.



SERVICE INFORMATION

Recommendations

- The empty spaces in the roofing to be covered with transparent or opaque materials must be permanently protected by using a metallic net in accordance with the test required by UNI 494.
- Do not lay the sheets in case of strong wind.
- Do not treat the surfaces with unsuitable products (e.g.: paint remover, acids, solvents, strong bases).
- Do not expose to flames.
- Do not walk on the sheets without a weight distribution board.

Snow and wind loads: the design takes into account loads resulting from snow and wind depending on the area and altitude. The test consists of ascertaining that the sheet (corrugated or ribbed) selected for the roofing in a particular area at a particular altitude is properly resistant. For loading capacity of the various profiles, refer to the appropriate table.



ELYPLAST LAYING
INSTRUCTIONS



ELYSOL LAYING
INSTRUCTIONS



Brianza Plastica SpA
Via Rivera, 50 - 20841 Carate Brianza (Italy)
Ph. +39 0362 91601 - Fax +39 0362 990457
elysol.brianzaplastica.it/en/ - www.grp-sheets.com/en/
sales-grpbuiding@brianzaplastica.it



The features and technical data contained in this catalog may be subject to changes without prior notice. For updated technical data and product data sheets, always refer directly to the company. Brianza Plastica also declines any responsibility deriving from incorrect use of the product, as the conditions of use are not under our direct control.

